

EngardeSwitch

Use EngardeSwitch for switching between several DiapoEngarde on computers of the network.

You can launch several DiapoEngarde on a computer with different competitions or different documents of a competition or a Photo slideshow.

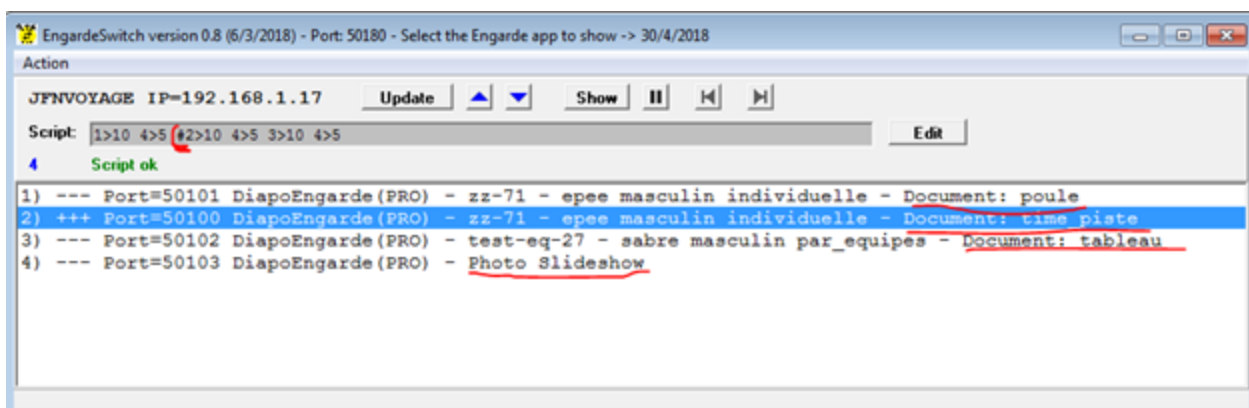
For example, on computer A, launch 2 Engarde on competitions C and K.

On computer B, launch 4 DiapoEngarde:

- open competition C and display document X,
- open competition C and display document Y,
- open competition K and display document Z,
- execute a Photo slideshow.

Use full screen for each DiapoEngarde (you can go from an app to another with key Alt-Tab).

Launch EngardeSwitch on computer A and do "Action | Get the list of Apps". You get:



There is a panel for each computer running DiapoEngarde or ShowPiste. Computers are indicated by their names, their IP addresses and with the list of the apps.

Each app has:

- a number. You can change the order and the number of a line by selecting the line and moving it with the blue arrows.
- "---" when it is minimized and "+++" when it is not.
- the port.
- the name of the app.
- the description of the competition of the app and the type of document.

Update

You can update the list of apps of a computer with the Update button.

You can update the list of apps of all the computers with menu "Action | Get the list of Apps".

Manual use

Select an app with a click and click on "Show".

Automatic progression with a script

A script is a text like:

1>10 4>5 2>10 4>5 3>10 4>5

which means: show app 1 during 10s then app 4 during 5s then app 2 during 10s then app 4 during 5s then app 3 during 10s then app 4 during 5s then continue from the beginning.

Use the "Edit" button to enter a script and the "ok" button to validate the script. Use the start black button to launch the script. Note the # in the script which indicates the current item applied. Use the grey arrow buttons to go manually forward or backward if needed. Use the pause button to stop.